

An abstract painting by Alex Cree featuring thick, expressive brushstrokes in a palette of blue, orange, yellow, pink, and purple. The composition is layered and textured, with a central area of white and orange tones. The overall style is gestural and expressive.

tregony
contemporary®

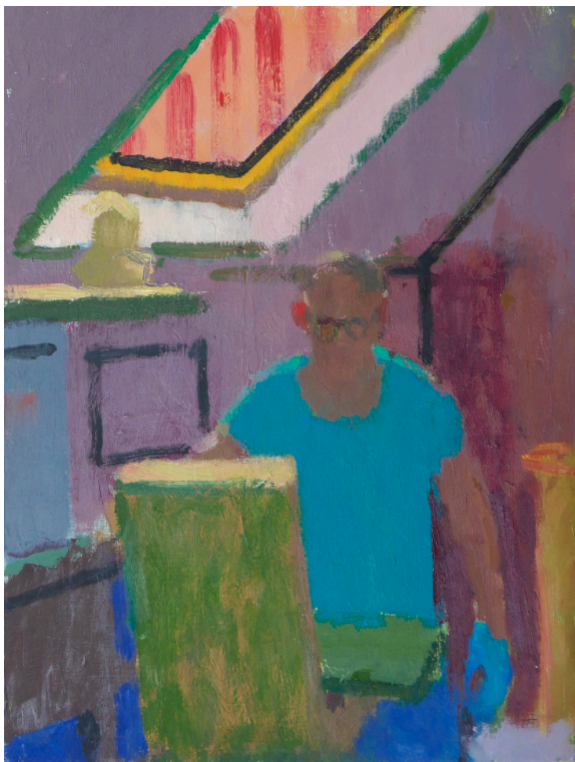
St Mawes

Alex Cree

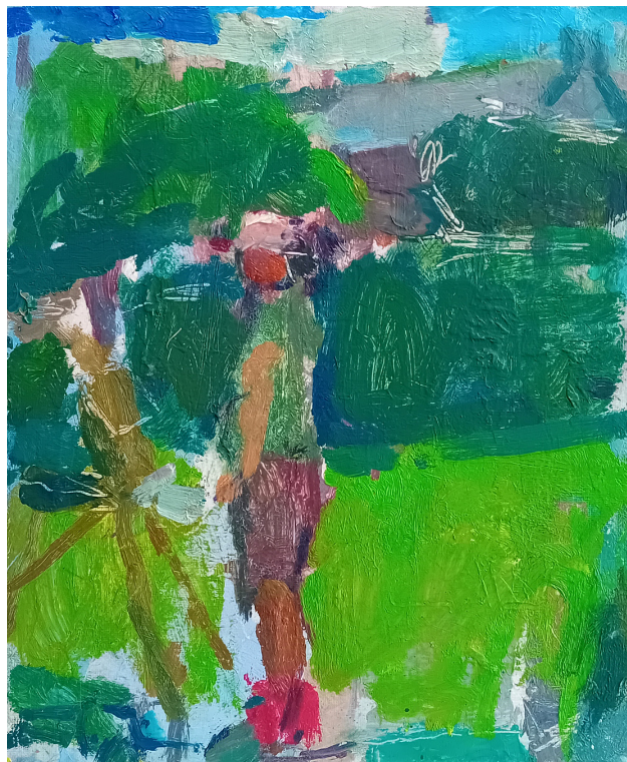
Familiar Things

An abstract painting by Michael Weller featuring thick, expressive brushstrokes in a palette of teal, green, yellow, and red. The composition is layered and textured, with a central area of white and yellow tones. The overall style is gestural and expressive.

Michael Weller



Alex Cree
The Painter At Work, MW.
Oil on Board
40 x 30 cm, 16" x 12".



Michael Weller
Landscape Painter, (Alex).
Oil on Panel
30 x 25 cm, 12" x 10".

tregonycontemporary[®]
british and international contemporary art

Brian & Judi Green request the pleasure of your company at

Familiar Things

Alex Cree | Michael Weller

New Paintings

Opening Saturday 4 July 2026
from 12 - 5 pm.

The exhibition continues until Saturday 25 July 2026
Opening hours: Tuesday - Saturday 11 am - 5 pm.

Tregony Contemporary, 11 Bohella Road, St Mawes, Cornwall TR2 5DL.

Tel: +44 (0)7496 953471 / e: hello@tregonycontemporary.com / www.tregonycontemporary.com

Front cover, top, Alex Cree, 'Reading Together' (detail), bottom, Michael Weller, 'Late Afternoon (Table Life)' (detail).

Back cover, top, Alex Cree, 'Folk Musicians (Harmony in Green)' (detail), bottom, Michael Weller, 'Coastal Light' (detail).

FAMILIAR THINGS

Familiar Things brings together paintings by Alex Cree and Michael Weller NEAC, two long-standing friends whose work is shaped by sustained observation and a shared commitment to painting from life.

Having spent many years painting alongside one another outdoors, both artists maintain independent studio practices that differ significantly in approach yet remain connected through a close attention to everyday experience.

For Cree, drawing plays a central role. His paintings simplify and distil observed moments, family life, interiors, musicians, figures, balancing structure with an increasingly heightened use of colour. Weller's work moves more slowly through the material language of paint itself, returning repeatedly to familiar objects and arrangements, allowing tone, surface and spatial relationships to emerge over time.

What connects the two artists is not similarity of style, but a shared discipline of looking. Both return repeatedly to familiar subjects, not to simply record them, but to understand them more fully through painting.

The exhibition moves between interior and exterior worlds: intimate domestic spaces, figures absorbed in everyday activity, still lifes, harbours and landscapes observed directly from life. Throughout, there is an attentiveness to ordinary experience and the quiet visual relationships that shape it.

In Familiar Things, the familiar becomes a starting point for sustained enquiry, paintings that are thoughtful, searching and deeply rooted in lived observation.

FAMILIAR THINGS



Alex Cree.
Evening Drink.
Oil on Board
27 x 17 cm, 10.6" x 6.75".



Michael Weller.
Still Life With Green Mug.
Oil on Panel
45 x 55 cm, 17.75" x 21.75".

ALEX CREE

Known for colourful and often quietly witty paintings, Alex Cree draws much of his subject matter from every day life. Quick line drawings made of family, friends, musicians, animals and local events often become the starting point for paintings developed later in the studio.

Guided by the idea that “less is more”, Cree’s paintings balance simplification with structure. Influenced by artists such as Henri Matisse, he is interested in how colour, shape and rhythm operate within the rectangle of the painting itself, allowing each element to hold its place while remaining visually alive.

Some works are completed quickly and instinctively, while others remain in the studio for long periods before reaching resolution. Whether made from life or developed from drawings, his paintings retain a sense of immediacy alongside careful formal consideration.

Cree studied at Bournemouth College of Art and Design, Canterbury Christ Church University and later at the Royal Drawing School. He has received the Sidney Cooper Drawing Prize, the Denis Mahon Scholarship from the Royal Drawing School and the Phyllis Roberts Prize from the Royal Institute of Oil Painters. His work has been widely exhibited, including at the New English Art Club and in the 2026 exhibition Looking for Appearance, exploring the legacy of the Euston Road School.



The Young Musician.
Oil on Board
31 x 20 cm, 12" x 8".



Folk Musicians (Harmony in Green).
Oil on Board
45 x 55 cm, 17,75" x 21,5".

FAMILIAR THINGS



The Piano Lesson.
Oil on Board
25 x 30 cm, 10" x 12".

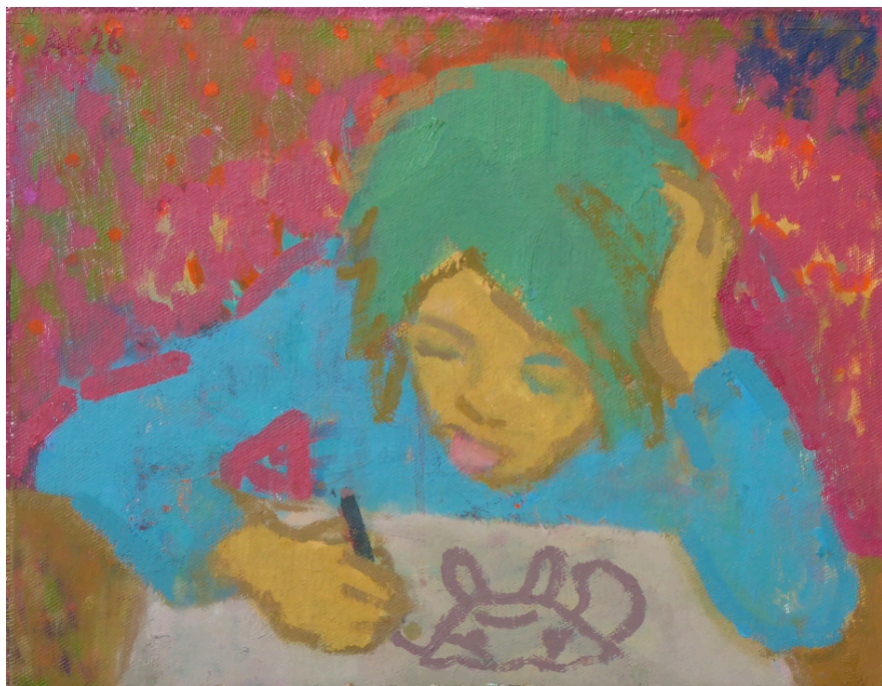


Reading Together.
Oil on Board
24.5 x 30 cm, 9.5" x 12".

ALEX CREE



Drawing.
Oil on Board
30 x 21 cm, 12" x 8.25".



Concentration.
Oil on Board
33 x 42 cm, 13" x 16.5".

FAMILIAR THINGS



Man With Cat On Knee.
Oil on Board
20 x 25 cm, 8" x 10".



Small Car Study.
Oil on Board
12 x 14 cm, 4.75" x 5.5".

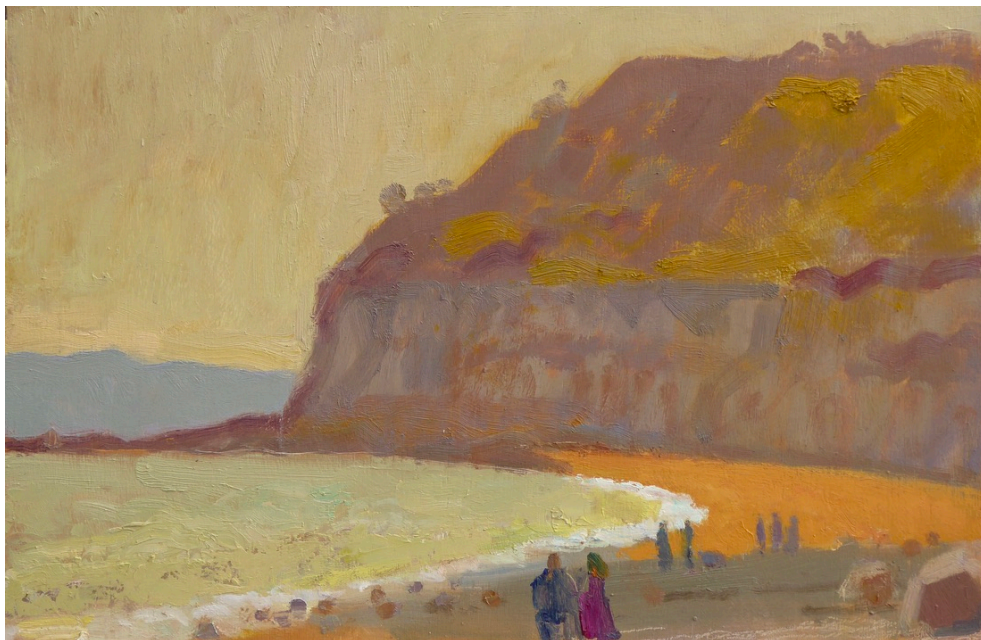


Cat On A Patterned Cushion.
Oil on Board
25,5 x 30,5 cm, 10" x 12".



The Artist's Citroen (The Van).
Oil on Board
19,5 x 25 cm, 7.75" x 10".

ALEX CREE

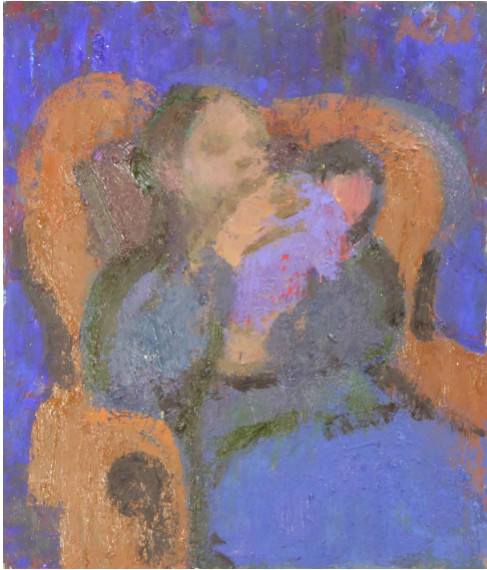


Golden Cap Under A Yellow Haze.

Oil on Board

30 x 46 cm, 12" x 18".

FAMILIAR THINGS



Comforting.
Oil on Panel
23 x 20 cm, 9" x 8".



Star Wars Panto.
Oil on Panel
21 x 30 cm, 8.25" x 12".

ALEX CREE



The Quivering Poets (Two Musicians).

Oil on Panel

30 x 30 cm, 12" x 12".



Puppet Show With Hurdy-Gurdy Player.

Oil on Panel

30 x 40 cm, 12" x 16".

MICHAEL WELLER NEAC

Michael Weller paints from life using the objects and surroundings of his studio – cups, bottles, fruit, flowers and other familiar things arranged in natural light. Paintings often develop slowly through repeated looking and adjustment, with objects moved and rearranged until the relationships between colour, tone and form begin to settle.

Since moving to Dorset in 2023, Weller has increasingly returned to painting outdoors, working directly from the landscape around the harbour and coastline near his home. Unlike the stillness of the studio, these paintings embrace uncertainty and change – shifting weather, moving boats and passing figures becoming part of the experience of observation itself.

Although rooted in direct observation, Weller's paintings are equally concerned with the formal relationships within painting: shape, tone, rhythm and surface. The everyday subjects of his work become a way of exploring attention, structure and the quiet complexity of looking.

Originally studying librarianship before turning to painting, Weller later studied Fine Art at London Metropolitan University, followed by further training in portraiture at Lavender Hill Studios. He participated in The Craft of Drawing and Painting at Leighton House and was awarded an NEAC Drawing Scholarship.

He received the Winsor & Newton Award at the New English Art Club Annual Exhibition and the Le Clerc Fowle Medal at the Royal Institute of Oil Painters Annual Exhibition. In 2022 he was elected a member of the New English Art Club.

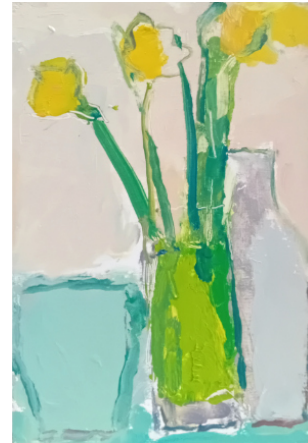
Alongside his studio practice, Weller teaches regularly, maintaining a close connection to drawing and painting from life.



Sea Light.
Oil on Board
51 x 41 cm, 20" x 16".



Roses.
Oil on Board
24 x 18 cm, 9.5" x 7.2".



Daffodils in a Glass.
Oil on Panel
31 x 20 cm, 12" x 8".

FAMILIAR THINGS



Spring Afternoon.

Oil on Board

35 x 28 cm, 14" x 11".



Moving Weather.

Oil on Board

31 x 41 cm, 12.5 x 16".

MICHAEL WELLER NEAC



Coastal Light.
Oil on Board
25 x 35 cm, 10" x 14".



Shifting Light.
Oil on Board
31 x 41 cm, 12.5" x 16".

FAMILIAR THINGS



Morning Light.
Oil on Board
44 x 47 cm, 17.5" x 18.5".



Quiet Table.
Oil on Board
75 x 50 cm, 29.5 x 19.5".

MICHAEL WELLER NEAC



Late Afternoon (Table Life).

Oil on Board

50 x 76 cm, 19.75" x 30".

FAMILIAR THINGS



Before Evening.
Oil on Board
31 x 41 cm, 12" x 16".

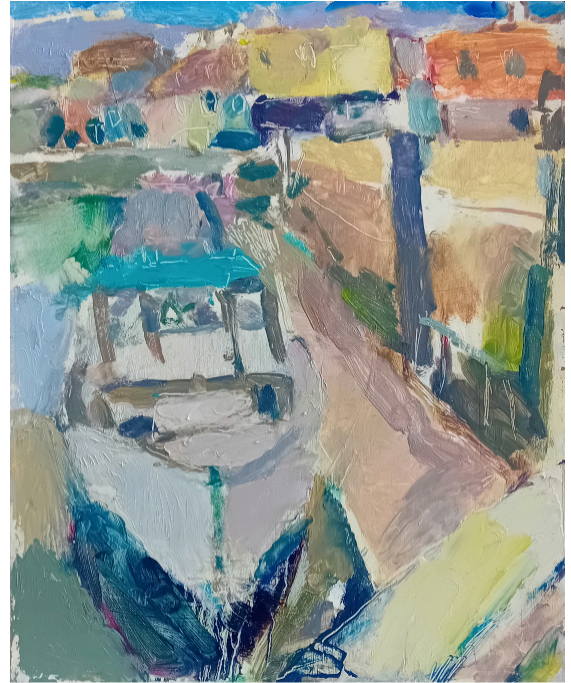


Road To The Coast.
Oil on Board
28 x 36 cm, 11" x 14".

MICHAEL WELLER NEAC



Harbour And Crabbers.
Oil on Board
35 x 30 cm, 14" x 12".



Spring Morning.
Oil on Board
28 x 36 cm, 11" x 14".



My Girl.
Oil on Board
50 x 40 cm, 20" x 16".

FAMILIAR THINGS

Studio Still Life.

Oil on Panel

84 x 59 cm, 33" x 23,25".



tregonycontemporary[®]

british and international contemporary art

Familiar Things

Alex Cree | Michael Weller

New Paintings

04/07 - 25/07/2026

Purchasing Work

Works are available for purchase on receipt of this catalogue and online from 1 July 2026.

To receive a preview list of works, please DM with email, or contact Brian Green, hello@tregonycontemporary.com

Exhibition Opening Times

Tuesday to Saturday
11 - 1pm & 2 - 5pm

Contact

Brian Green

Tregony Contemporary

11 Bohella Road,
St Mawes,
Cornwall TR2 5DL

M: 07496 953471

T: 01872 530505

hello@tregonycontemporary.com
www.tregonycontemporary.com

For full CVs and more about each artist's practice, please visit tregonycontemporary.com

All content © Tregony Contemporary 2026, Alex Cree and Michael Weller NEAC 'Familiar Things' exhibition and their respective owners. All rights reserved. No part of this publication may be reproduced, stored in a retrieval system, or transmitted in any form or by any means without the prior permission of the copyright holder. Photography by Alex Cree, Michael Weller and Tregony Contemporary.

Measurements are given in centimetres, height before width, and does not include framed dimensions.

Framed dimensions are listed on our website. E&OE. Not all works featured in this publication will be part of the exhibition.

For further details do email through or visit the gallery website.



tregony
contemporary®

St Mawes

